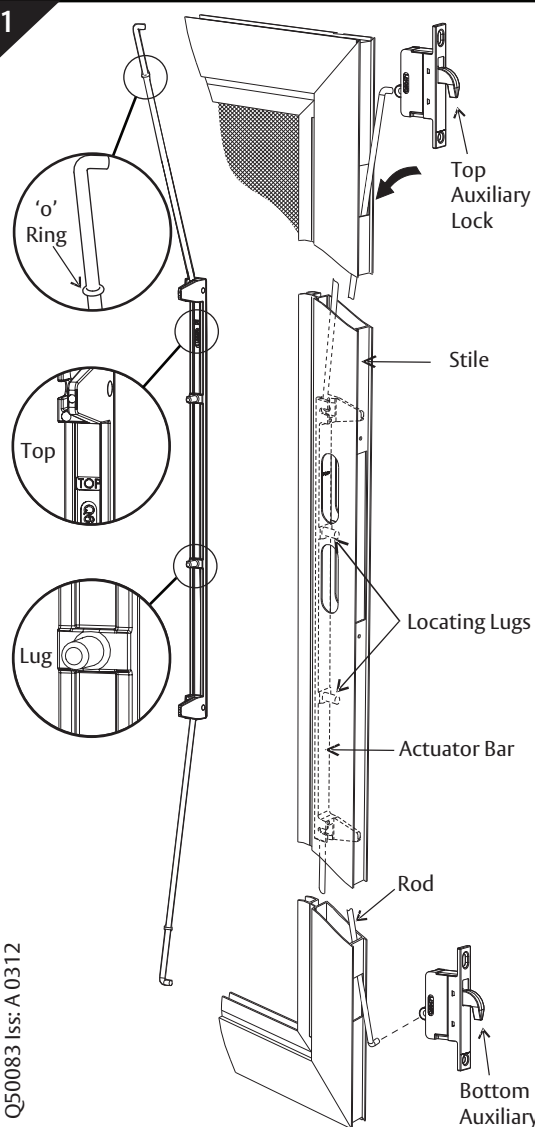


1

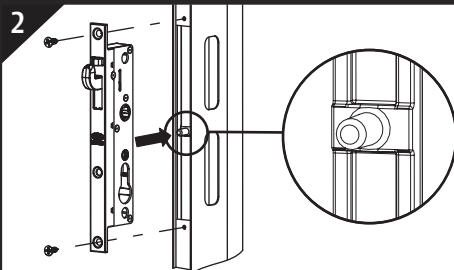


#### Fitting the Actuator Bar and Auxiliary Locks

**Note:** For ease of fitment remove door from the door frame.

- Assemble the Actuating Bar and Rods as shown prior to fitting to the door stile. With the "TOP" mark facing the front.
- Keep the locating lugs of the Actuating Bar facing the front edge of the door.
- Insert the Actuator Bar and rod assembly through the top cut-out and slide it through the door stile.
- With the Auxiliary locks in the locked position (as shown), **Important:** Connect the top Auxiliary lock first to the end of the rod followed by the bottom Auxiliary lock.
- Then push them both into the door stile.

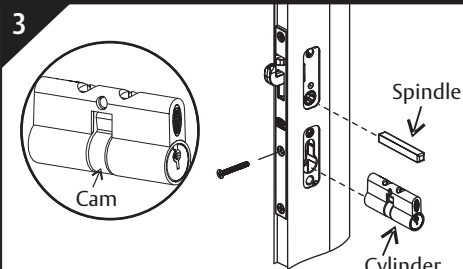
2



#### Fitting Central Lock

With the central lock in the factory set **Deadlock** position, insert into the stile. Locate and engage the lug on the Actuating Bar with the lock, then secure with screws. **Important:** The lock must be installed in the position shown, product warranty cannot be assured if installed upside down.

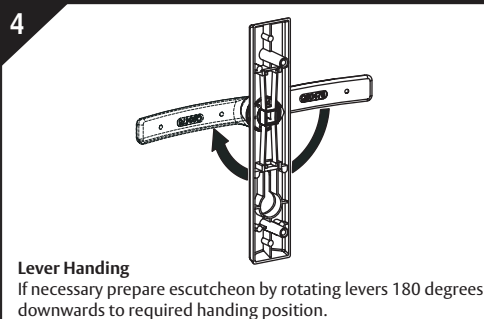
3



#### Fitting Cylinder & Spindle

- Insert cylinder so cam turns towards front of door.
- Loosely fix cylinder with screw.
- Then insert spindle into lock body.

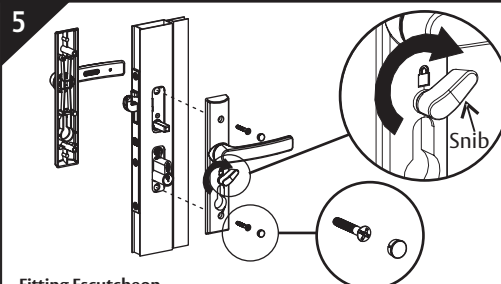
4



#### Lever Handling

If necessary prepare escutcheon by rotating levers 180 degrees downwards to required handing position.

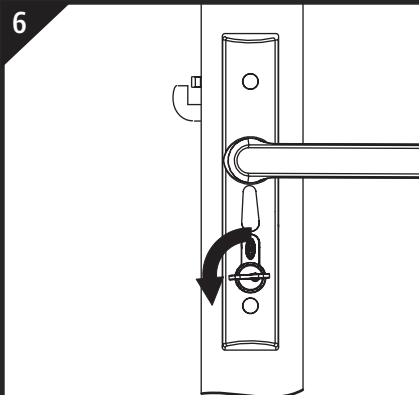
5



#### Fitting Escutcheon

- Fit escutcheon with snib on the inside face of the door.
- Ensure snib is to 90 degrees in the direction of the lever.
- Secure inside and outside escutcheons with screws and screw hole plugs.

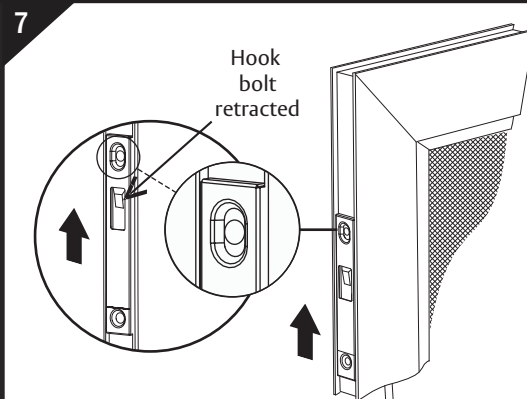
6



#### Passage Mode

With the central lock in the factory set **Deadlock** position, insert key and rotate 90 degrees away from the lever to the unlocked position or **Passage** mode. Snib rotates to the vertical position.

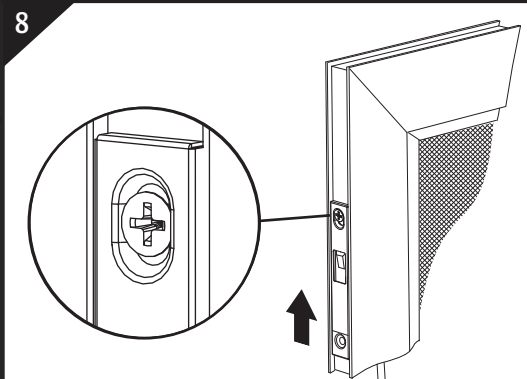
7



#### Drilling Hole in Top and Bottom Auxiliary Locks

- Gently push the top Auxiliary lock upwards to retract the hook bolt.
- Then drill a 3mm hole in the centre of the slotted hole.
- Repeat this step for the bottom Auxiliary lock.

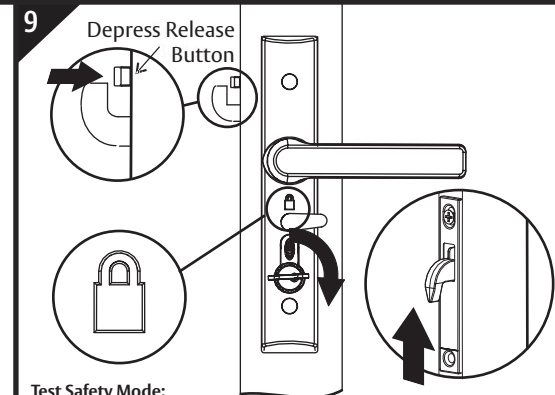
8



#### Fixing Screw to Top and Bottom Auxiliary Locks

- Gently push the top Auxiliary lock upwards to retract the hook bolt.
- Lightly fix screw in slotted hole.
- Repeat this step for the bottom Auxiliary lock.

9



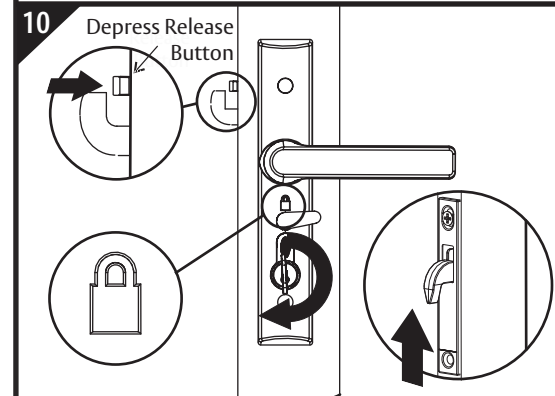
#### Test Safety Mode:

**Important:** Release button above hook bolt must be depressed.

**Rotate key or snib 90 degrees towards the lever:**

- Padlock symbol is visible.
- Inside and outside levers are locked.
- Auxiliary hook bolts are thrown and locked, push hook bolts upwards to check.
- Repeat **STEP 6** to return lock to **Passage** mode.

10



#### Test Deadlock Mode:

**Important:** Release button above hook bolt must be depressed.

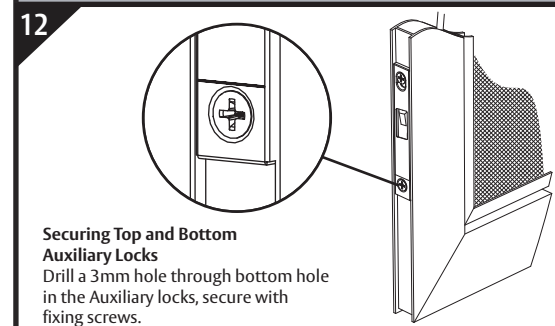
**Rotate key 180 degrees towards the lever:**

- Snib rotates 90 degrees towards the lever, padlock symbol is visible.
- Inside and outside levers are locked.
- Auxiliary hook bolts are thrown and locked, push hook bolts upwards to check.

11

**Important:** Reposition top and bottom Auxiliary locks if necessary to achieve **Safety** and **Deadlock** modes, then fully tighten fixing screws in **STEP 8**.

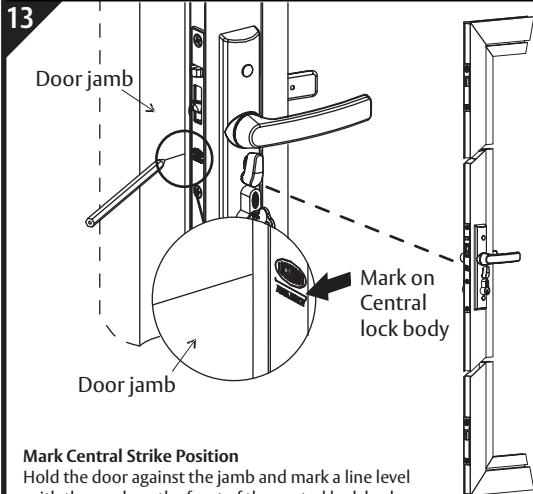
12



#### Securing Top and Bottom Auxiliary Locks

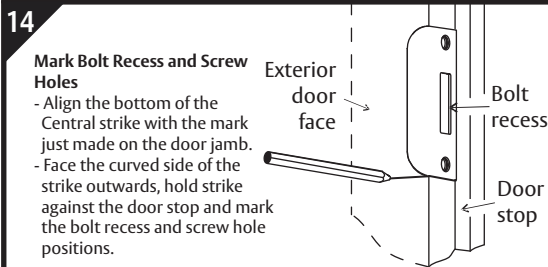
- Drill a 3mm hole through bottom hole in the Auxiliary locks, secure with fixing screws.

**Timber Door Central Strike Installation  
(Standard 19mm door)**



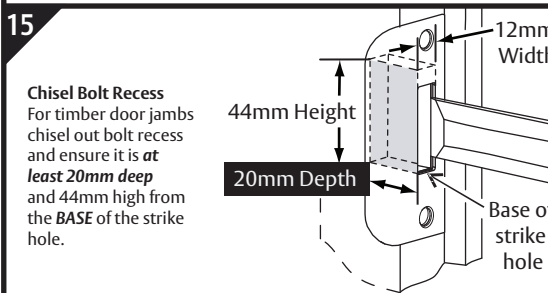
**Mark Central Strike Position**

Hold the door against the jamb and mark a line level with the mark on the front of the central lock body.



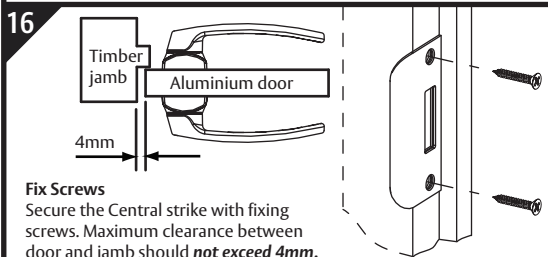
**Mark Bolt Recess and Screw Holes**

- Align the bottom of the Central strike with the mark just made on the door jamb.
- Face the curved side of the strike outwards, hold strike against the door stop and mark the bolt recess and screw hole positions.



**Chisel Bolt Recess**

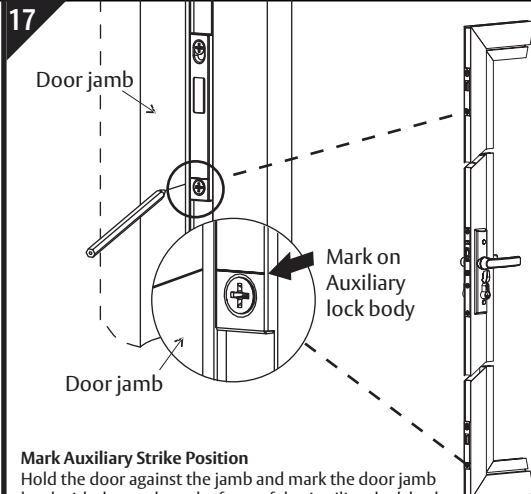
For timber door jambs chisel out bolt recess and ensure it is **at least 20mm deep** and 44mm high from the **BASE** of the strike hole.



**Fix Screws**

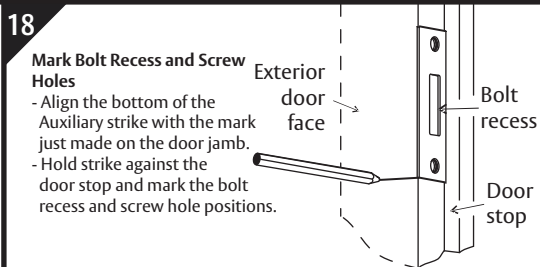
Secure the Central strike with fixing screws. Maximum clearance between door and jamb should **not exceed 4mm**.

**Timber Door Auxiliary Strike Installation  
(Standard 19mm door)**



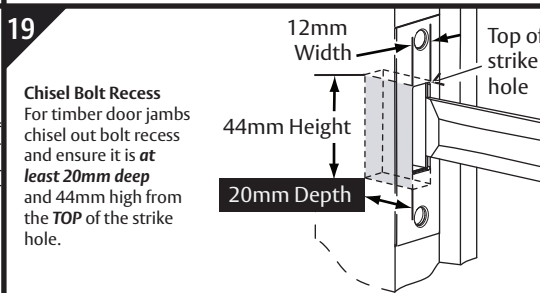
**Mark Auxiliary Strike Position**

Hold the door against the jamb and mark the door jamb level with the mark on the front of the Auxiliary lock body.



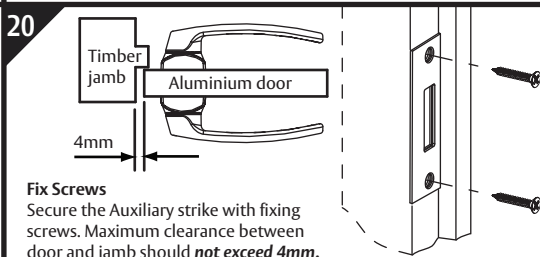
**Mark Bolt Recess and Screw Holes**

- Align the bottom of the Auxiliary strike with the mark just made on the door jamb.
- Hold strike against the door stop and mark the bolt recess and screw hole positions.



**Chisel Bolt Recess**

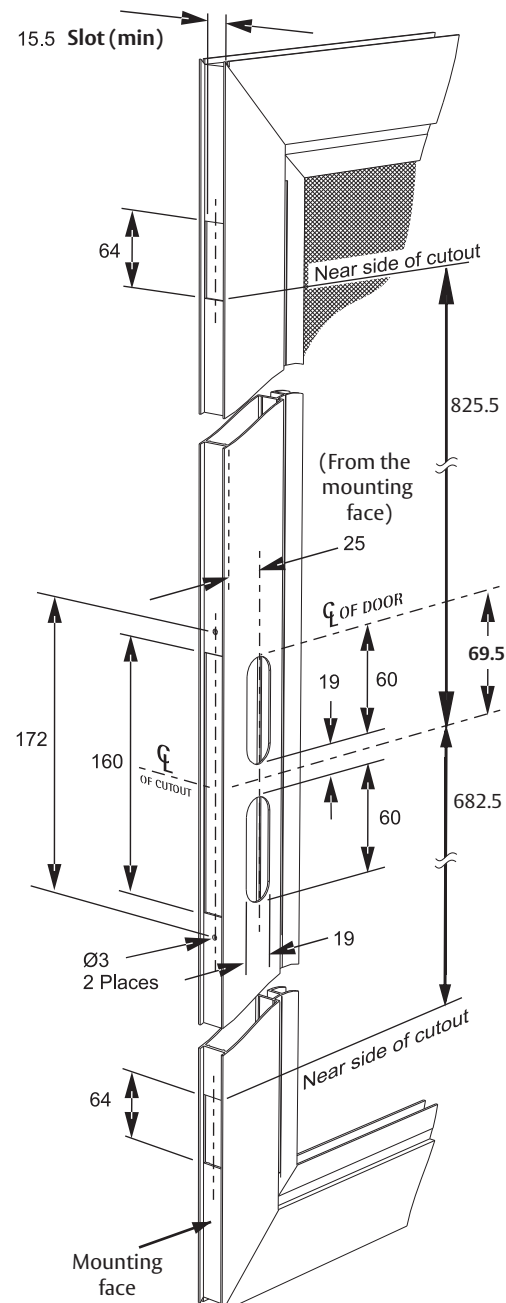
For timber door jambs chisel out bolt recess and ensure it is **at least 20mm deep** and 44mm high from the **TOP** of the strike hole.



**Fix Screws**

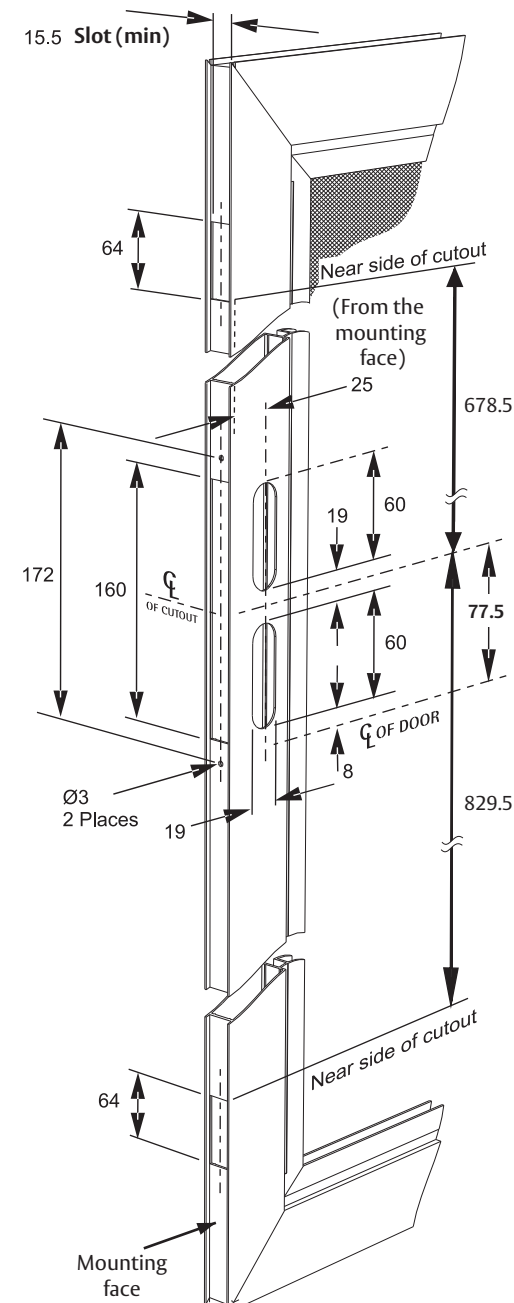
Secure the Auxiliary strike with fixing screws. Maximum clearance between door and jamb should **not exceed 4mm**.

**Mounting handle BELOW centreline of door**



Both sides of the door section must be cut to the dimensions given. Start with the centre of door (**CL OF DOOR**) then measure **69.5mm BELOW** and mark the (**CL OF CUTOUT**).

**Mounting handle ABOVE centreline of door**



Both sides of the door section must be cut to the dimensions given. Start with the centre of door (**CL OF DOOR**) then measure **77.5mm ABOVE** and mark the (**CL OF CUTOUT**).